

PLAT NO. 7 EASTPOINTE COUNTRY CLUB

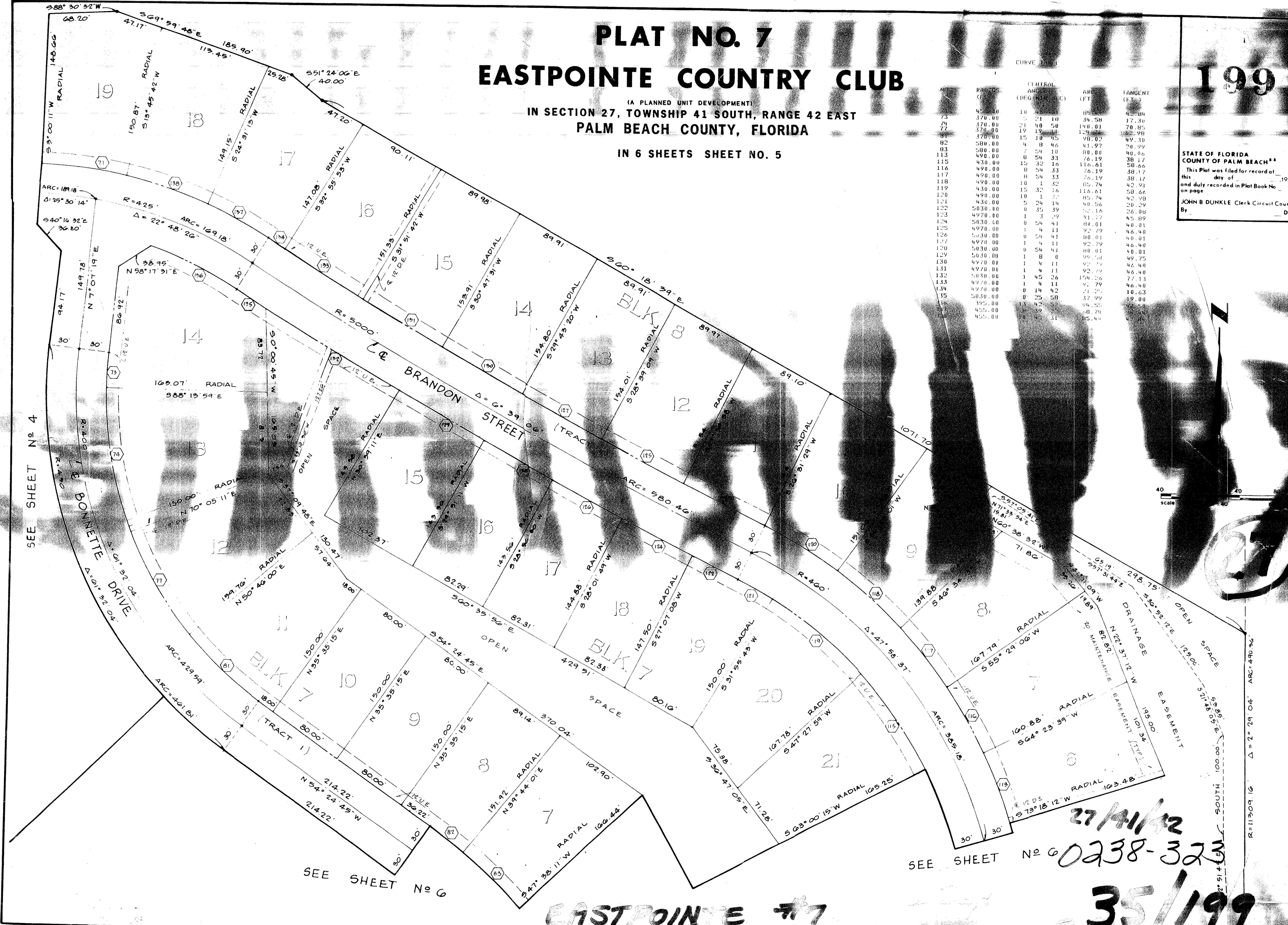
(A PLANNED UNIT DEVELOPMENT)
IN SECTION 27, TOWNSHIP 41 SOUTH, RANGE 42 EAST
PALM BEACH COUNTY, FLORIDA

IN 6 SHEETS SHEET NO. 5

NO.	RADIUS (FEET)	CENTRAL ANGLE (DEGREES)	ARC (FEET)	TANGENT (FEET)
73	450.00	10 48 31	85.51	41.04
74	370.00	5 21 18	69.58	33.30
75	370.00	21 40 50	140.01	70.85
76	370.00	19 12 44	129.88	65.98
77	370.00	15 10 45	108.02	54.99
78	580.00	4 8 46	41.97	20.29
79	580.00	7 54 10	80.00	40.00
80	490.00	8 54 33	76.19	38.17
81	490.00	15 32 16	116.61	58.66
82	490.00	8 54 33	76.19	38.17
83	490.00	18 1 32	136.19	68.17
84	430.00	15 32 16	116.61	58.66
85	490.00	10 1 27	85.74	42.98
86	430.00	5 24 14	60.56	30.29
87	5030.00	0 35 39	52.18	26.08
88	4970.00	1 3 29	51.17	25.89
89	4970.00	0 54 41	84.01	40.01
90	5030.00	1 4 11	52.79	26.40
91	4970.00	0 54 41	84.01	40.01
92	4970.00	1 4 11	52.79	26.40
93	5030.00	0 54 41	84.01	40.01
94	5030.00	1 8 0	95.58	47.75
95	4970.00	1 4 11	52.79	26.40
96	4970.00	1 4 11	52.79	26.40
97	4970.00	1 45 26	154.26	77.13
98	4970.00	1 4 11	52.79	26.40
99	4970.00	0 14 42	21.25	10.63
100	5030.00	0 25 58	37.99	19.00
101	395.00	13 42 28	68.55	34.28
102	455.00	39 25 35	108.74	54.37
103	455.00	70 40 11	185.44	92.72

199

STATE OF FLORIDA
COUNTY OF PALM BEACH
This Plat was filed for record at
this _____ day of _____, 1978,
and duly recorded in Plat Book No. _____
on page _____
By _____
JOHN B. DUNKLE, Clerk Circuit Court
D.C.



SEE SHEET No 4

SEE SHEET No 6

SEE SHEET No 6

EASTPOINTE #7

37/41/42
0238-323

35/199